

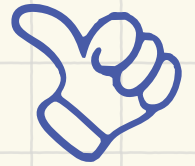
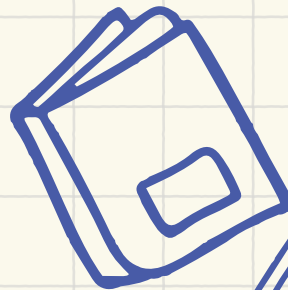
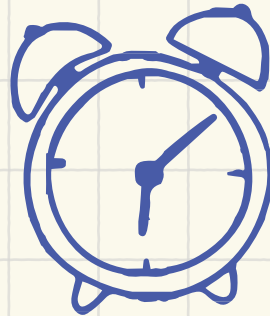
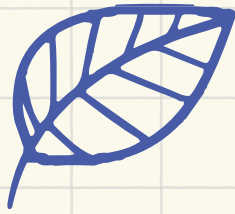
Action Short of Strike

KEY POINTS



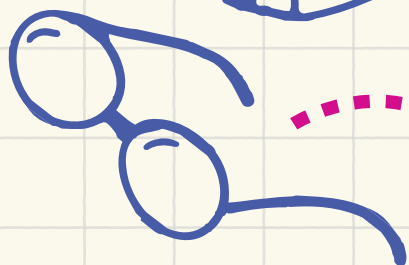
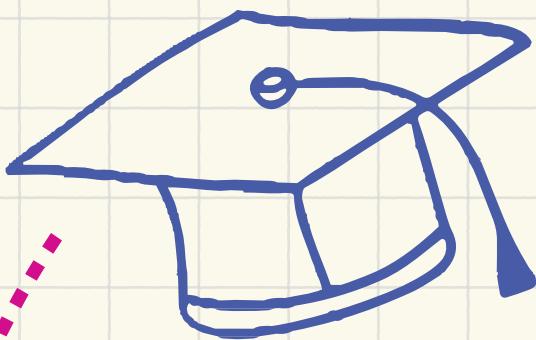
Workload

- No to any work not agreed in your time budget.
- PPA, outside of pupil sessions, to be done at a time and place that suits you.
- KS3, KS4 and KS5: No internal tracking data added to SIMS.



Work Life Balance

- 1 meeting per term to a max 1hr with agenda provided 48hours in advance.
- No new initiatives without trade union agreement.
- No communications outside of pupil sessions.*
(*unless for child protection/safeguarding)



Evaluation

- No book scrutiny or, classroom observations outside of PRSD.
- No participation in assessment arrangements at the end of Foundation and Key Stages One, Two and Three.
- Members will refuse to undertake invigilation of external exams.

