

- Registration and payment for courses available online at [moodle.intolearning.ie](https://moodle.intolearning.ie)
- Online courses will run from **Monday 3 July to Wednesday 19 July 2023**.
- For specific queries contact [learninghelpdesk@into.ie](mailto:learninghelpdesk@into.ie)
- All online courses €35

## ONLINE COURSES

### Moving from mainstream to SET

This online course will enable participants gain an understanding of the role of the special education teacher (SET) particularly for those teachers moving to this role for the first time. The current SEN model will be explored in a comprehensive manner including policy and practice details. The course will also explore a variety of learning difficulties which may be encountered as well as an exploration of the diagnostic and screening tests available to identify support needed for such difficulties.

From a pedagogical perspective it will explore good practice in supplementary teaching to support oral language development, phonological awareness, reading and general mathematical difficulties.



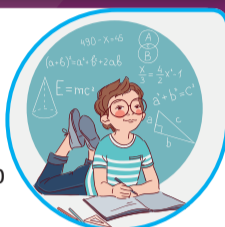
### Learning Through Play

This online course explores the concept of learning through play including: current trends and research in the pedagogy of play, the role of the teacher and the benefits and challenges of play in the classroom. The course will explore the Aistear assessment guidelines and the following areas: pretend, socio-dramatic and small world play; planning for play and developing language through play. This course is ideal for any teacher wishing to incorporate play as a pedagogy into their classroom practice.



### Maths Problem-Solving: A process, not a product!

This online course focuses on a process led approach to maths problem-solving across all class levels. It includes an exploration of mathematical language and maths thinking. It presents a series of problem-solving strategies, a tool kit and a framework to support maths problem-solving. It also explores assessment in maths problem-solving, mathematics in the environment and mathematics across the curriculum. It includes a series of videos showing the teaching approaches explored in the module being used in the classroom.



### Understanding and Supporting Pupils suffering Adverse Childhood Trauma

This online course seeks to enable teachers to understand adverse childhood experiences, how they may manifest in a learning environment and how best they can be accommodated to support the child's learning needs. The course also explores how to manage/support one's own reaction to and interaction with behaviour associated with children who have experienced childhood trauma. Case studies of children suffering adverse experiences as a result of parental alcohol abuse and of children suffering from homelessness will be explored as part of the course.



### Global Citizenship Schools

This online course explores the concepts of justice, sustainability and equality at a local, national and global level through the lens of human rights. It seeks to enhance teachers' confidence and competence when engaging with these issues by providing a range of teaching approaches, case studies and resources. It also seeks to promote a more critical and action-based approach when teaching global citizenship issues. It supports the underpinning objectives of INTO Global Citizenship Schools and is suitable for all primary class levels.



### Embracing racial, ethnic and cultural diversity in our schools

The course will explore race and racism, concept of race and racism including the interaction of power and privilege. It will also consider how racial, ethnic, cultural and linguistic diversity can be utilised within the classroom, the staffroom and the wider school community. The course explores how challenging racism and race-biased language and behaviours can prevent racism and racial bullying/harassment in schools. The course will also advise on good practice when teaching English as an additional language and on approaches to acknowledge pupils' mother tongues. Finally, the course will harness the School Self Evaluation process and the Yellow Flag Eight Step process to enable and empower schools to create an inclusive racial and culturally diverse school.



### Literacy through the Arts

This online course explores how a school's discrete literacy programme can be supported and extended using the arts: drama, visual and musical arts. The course details good practice in literacy teaching including discrete literacy teaching approaches to support the new primary language curriculum. It also refreshes teachers' familiarity with the arts curricula and how literacy can be integrated into arts lessons – music, the visual arts and drama. It concludes with a step-by-step guide on how to bring a story to the stage from a creative writing and oral language development perspective that includes video footage of the process.



## FACE-TO-FACE COURSES

### Cumarsáid, Comhlúadar & Craic Scoil Samhraidh

Tá an cúrsa seo dírithe ar mhúinteoirí bun scoile atá ag iarraidh feabhas a chur ar a gcumas labhartha agus dá réir ar a gcumas chun an teanga a theagasc nó teagasc ríd an teanga ag gach leibhéal sa bhunscoil. Beidh ceardlanna/gníomhaíochtaí ar ábhair éagsúla mar shampla: amhránaíocht, filíocht agus cluichí teanga. Beidh siúlóidí agus turas ar oileán chomh maith le h-imeachtaí oíche.

**(3-7 Iúil; Ionad an Bhlascoid Móir, Dún Chaoin)**

**Tuilleadh eolais ó Nuala Uí Gheairilt (m) 0876534633 (r) [nualauigheairilt@gmail.com](mailto:nualauigheairilt@gmail.com)**



### Language Matters: Effective Practices for EAL Support in Primary Schools

This online course outlines effective planning, teaching, assessment, and whole-school practices for EAL support in primary schools. It is designed for both mainstream and support teachers of learners of EAL and offers important insights, skills, and resources for working with these pupils within and beyond the mainstream classroom. This course blends both theoretical and practical considerations, so that attendees will not only develop important knowledge for their work with learners of EAL, but will also emerge with useful pedagogical tools to respond to the identified needs of children in their schools.



**NEW COURSE!**

### Optimising Your Middle Leadership Role in School

The course will be of particular interest and support to new and aspiring Assistant Principals as well as giving newly appointed principals and deputy principals greater confidence in how to optimise middle leadership to benefit ongoing school improvement. The modules will explore ways to optimise your leadership capacity guided by the Looking at our School framework. The course will be informed by experts on school leadership priorities and challenges, and will provide lots of practical opportunities over the five days on how you can develop your leadership skills overtime. There will be a specific focus on distributed leadership, leading curriculum change, promoting an inclusive school environment and understanding the roles and responsibilities of AP posts.

**(10-14 July inclusive; Teachers' Club, Dublin 1)**



**NEW COURSE!**

### Digital Technologies in SESE and STEM

This online course explores the use of digital technologies to enhance teaching and learning in the areas of Social, Environmental and Scientific Education (SESE) and Science, Technology, Engineering and Mathematics (STEM). In particular, it will provide a hands-on experience of online resources for science, history, geography, maths and basic programming. It will feature survey creation tools for science projects, timeline creation tools and multi-media story telling applications for history, various online mapping resources for geography, a variety of online numeracy resources, tools and applications as well as approaches to introduce pupils to computer programming including the use of Scratch. This course is NOT suitable for beginners.



### Creating an LGBT+ Inclusive School

This online course seeks to support teachers and school leaders to create an LGBT+ inclusive school. It explores LGBT+ identities, terminology, visibility and inclusion, how best to implement education strategies to prevent homophobic, biphobic and transphobic bullying and how to positively represent LGBT+ identities through curriculum and classroom interactions. It will allow teachers gain an understanding of gender non-conformity and to support those who are transitioning between genders as well as providing guiding principles for an LGBT+ inclusive working experience and LGBT+ inclusion in school policies. This course also provides a collation of useful resources for all class levels.



## SYNCHRONOUS COURSE

### Understanding and Preventing Racism Through A Global Justice Lens

This course will offer both synchronous and asynchronous learning opportunities for teachers to support their developing understanding of identity-based and structural racism and discrimination related to race, language, culture and/or ethnicity. Teachers will learn the importance of becoming anti-racist practitioners and how schools can promote anti-racism within a global social justice lens. This course will be particularly useful for teachers and school leaders who would like to learn more about the Vision, Objectives, Priority Actions and Recommendations of the National Action Plan Against Racism (NAPAR, March 2023) as it is relevant to schools.

**(Synchronous sessions on 3 and 4 July at 10am-1pm)**



**NEW COURSE!**